

TABLE 1: BE-8XXC/2XXC CAMERA ONLY OPTIONS

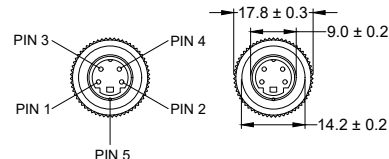
| PART NO. | MODEL NO. | DESCRIPTION | FIRMWARE VER. |
|----------|---------------|---|----------------------------------|
| 3243D | BE-800C-C | CAMERA, ELITE, HEATED, ULTRA-LOW-LIGHT, PAL, CAMERA ONLY | MA-A10CP_XXX_MP_REV1.1(190522) |
| 3481C | BE-800C(40)-C | CAMERA, ELITE, HEATED, ULTRA-LOW-LIGHT, PAL, 40°, CAMERA ONLY | MA-A10CP_WDRON_MP_REV1.1(190522) |
| 3482C | BE-800C(78)-C | CAMERA, ELITE, HEATED, ULTRA-LOW-LIGHT, PAL, 78°, CAMERA ONLY | MA-A10CP_WDRON_MP_REV1.1(190522) |
| 4411B | BE-801C-C | CAMERA, ELITE, HEATED, ULTRA-LOW-LIGHT, NTSC, CAMERA ONLY | MA-A10CN_XXX_MP_REV1.1(190522) |
| 3502B | BE-801C(40)-C | CAMERA, ELITE, HEATED, ULTRA-LOW-LIGHT, NTSC, 40°, CAMERA ONLY | MA-A10CN_WDRON_MP_REV1.1(190522) |
| 3503B | BE-801C(78)-C | CAMERA, ELITE, HEATED, ULTRA-LOW-LIGHT, NTSC, 78°, CAMERA ONLY | MA-A10CN_WDRON_MP_REV1.1(190522) |
| 4937A | BE-850C-C | CAMERA, ELITE, HEATED, ULTRA-LOW-LIGHT, PAL, 12-24VDC, CAMERA ONLY | MA-A10CP_XXX_MP_REV1.1(190522) |
| 3490A | BE-200C-C | CAMERA, ELITE, HEATED, ULTRA-LOW-LIGHT, PAL, BLACK AND WHITE, CAMERA ONLY | N/A |

Revision Notes

R1 - ADDED FIRMWARE VERSION TO TABLE 1 AND NOTES AS PER ECR CR-A681

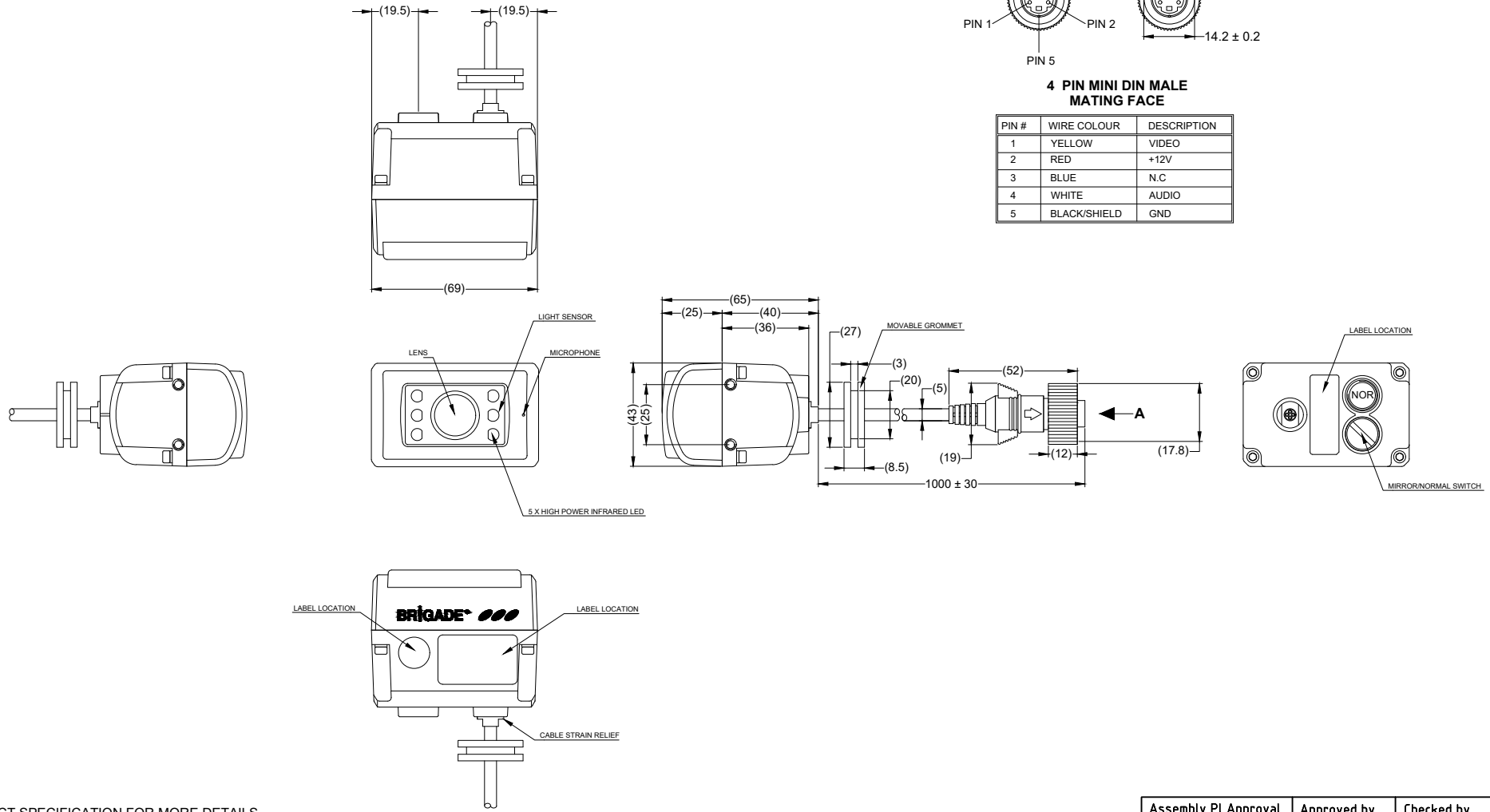
APA: T.CHOI | Drawn:S.LAVER | Checked:L.PILLAY | Approved:D.WALLIN | Date: 25/06/19

VIEW A



4 PIN MINI DIN MALE MATING FACE

| PIN # | WIRE COLOUR | DESCRIPTION |
|-------|--------------|-------------|
| 1 | YELLOW | VIDEO |
| 2 | RED | +12V |
| 3 | BLUE | N.C |
| 4 | WHITE | AUDIO |
| 5 | BLACK/SHIELD | GND |



- NOTES:
- REFER TO PRODUCT SPECIFICATION FOR MORE DETAILS.
 - FOR PRODUCT LABEL AND PACKAGING INFORMATION REFER TO MASTER BOM
 - ANY CUSTOMER MODIFICATION OF THIS PRODUCT CAUSING SUBSEQUENT FAILURE IS NOT A LIABILITY OF BRIGADE ELECTRONICS PLC.
 - REFER TO TABLE 1 FOR FACTORY INSTALLED FIRMWARE VERSIONS.

PROPRIETARY NOTICE
 THIS DESIGN AND TECHNICAL INFORMATION APPEARING ON THIS DRAWING IS THE PROPERTY OF BRIGADE ELECTRONICS, AND IS DISCLOSED IN CONFIDENCE. IT IS NOT TO BE COPIED, REPRODUCED, REVEALED TO OR EXPROPRIATED BY OTHERS, EITHER IN WHOLE OR IN PART WITHOUT THE EXPRESS WRITTEN CONSENT OF BRIGADE ELECTRONICS.



| | | | |
|---|----------------------------------|-------------------------|----------------------|
| Assembly Pl Approval T.CHOI 03/05/18 | Approved by B.JOHN | Checked by W.BEAZLEY | Drawn by S.LAVER |
| Angle of Projection | Units mm | Scale N/A | Released 04/05/18 |
| Status RELEASED | Assembly Ref BE-8XXC-C.2XXC-C | | |
| Part No SEE TABLE 1 | BE-003781-01-18 | | |